



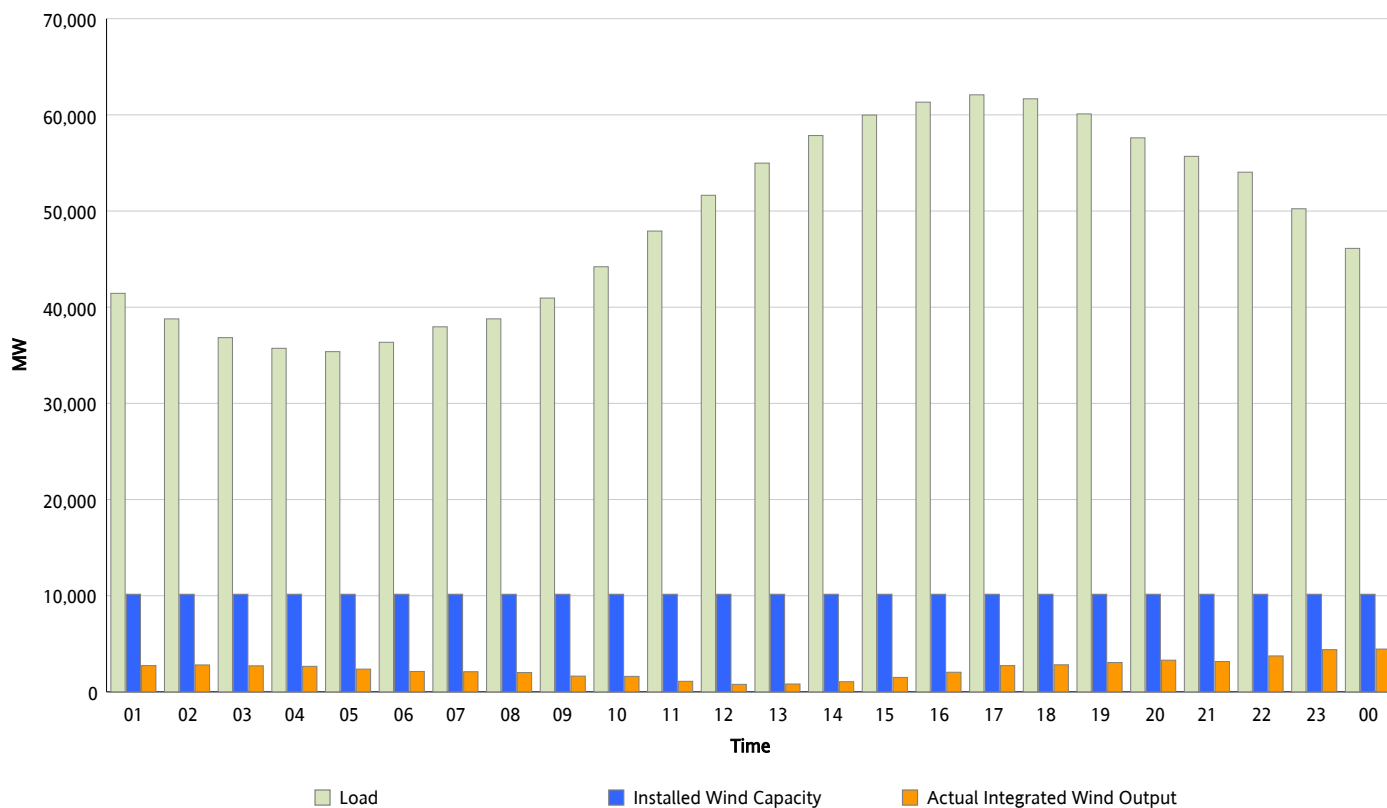
## ERCOT Grid Operations

### Wind Integration Report : 07/25/2013

Peak Load	62,084 MW
Load Peak Hour (HE)	17
Wind Over Peak	2,730 MW
Wind Record 05/02/13	9,674 MW
Max Wind Value*	4,781 MW
Wind Peak Time	23:59
Wind Integration %	10.8 %

#### Hourly Average Actual Load vs. Actual Wind Output

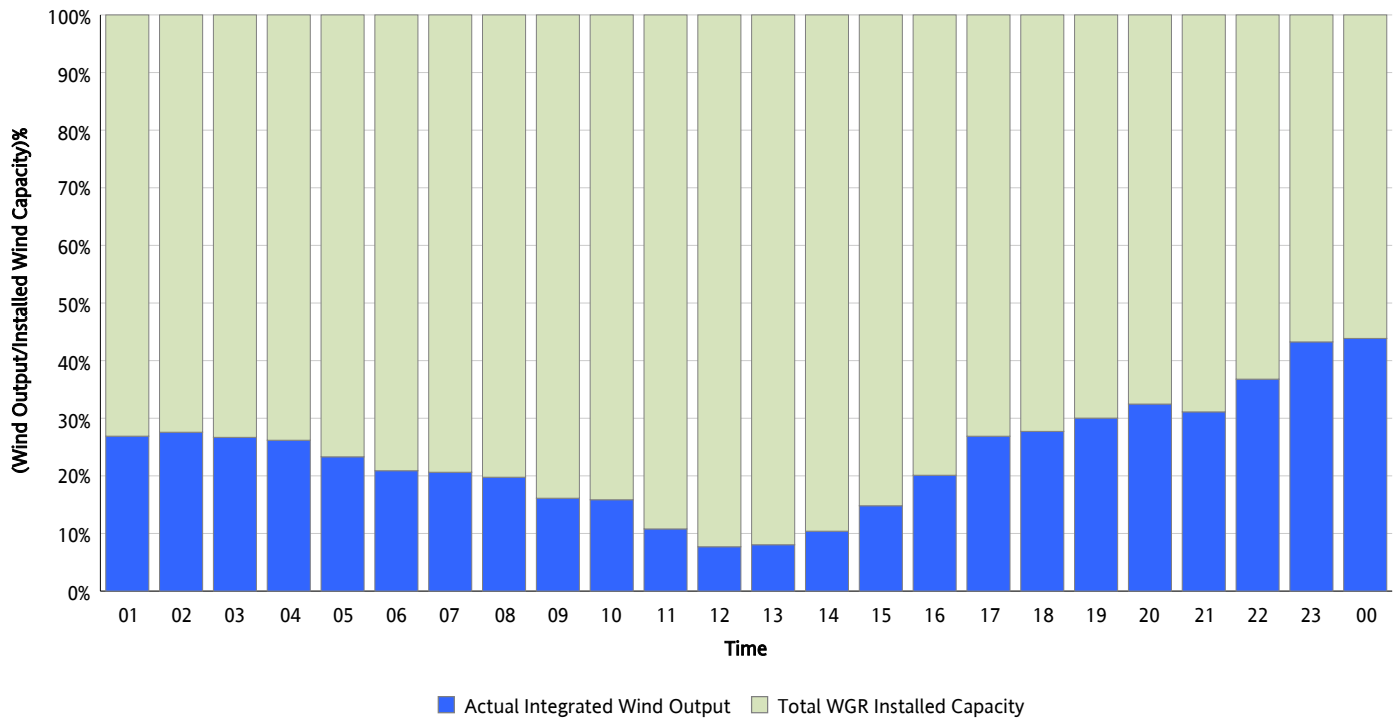
07/25/2013



\* Wind Record and Wind Max represent instantaneous values and the rest of the values are integrated over the hour

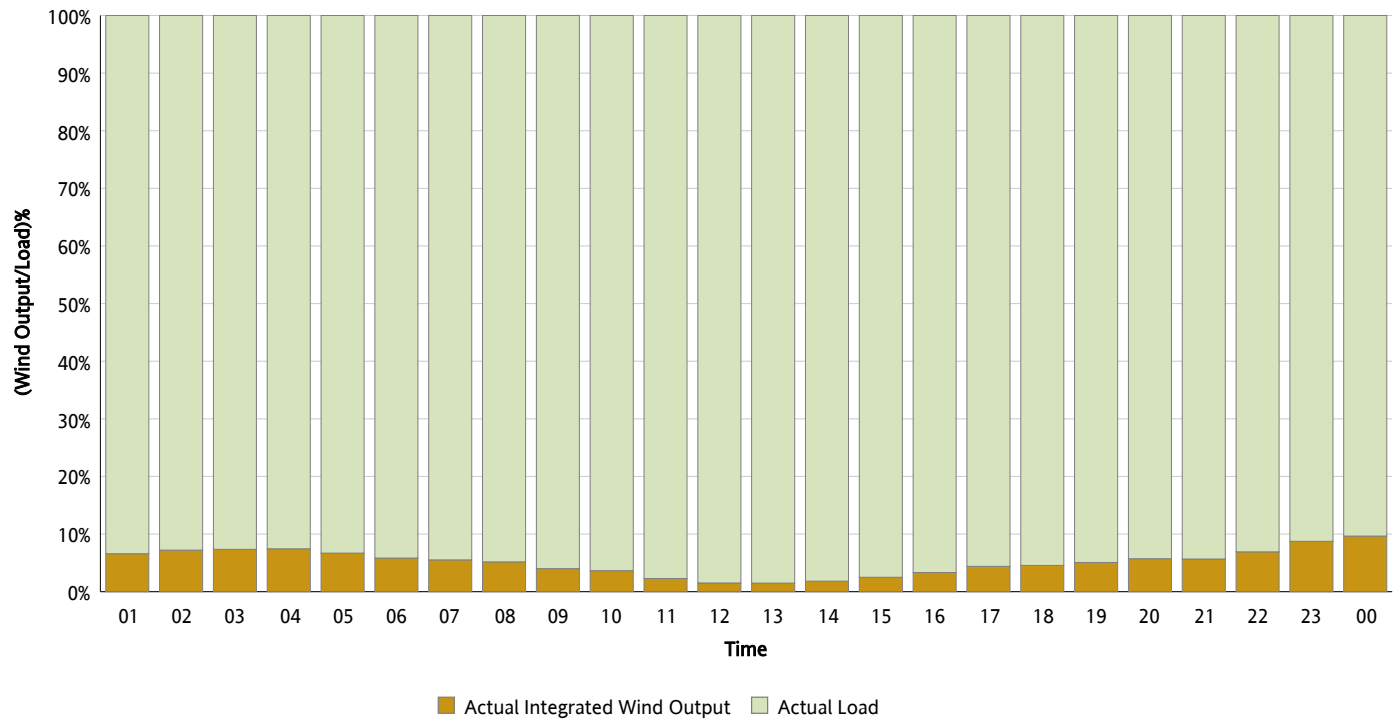
## Actual Wind Output as a Percentage of the Total Installed Wind Capacity

07/25/2013



## Actual Wind Output as a Percentage of the ERCOT Load

07/25/2013



## ERCOT Load vs. Actual Wind Output

07/18/2013 - 07/25/2013

